

econoboard

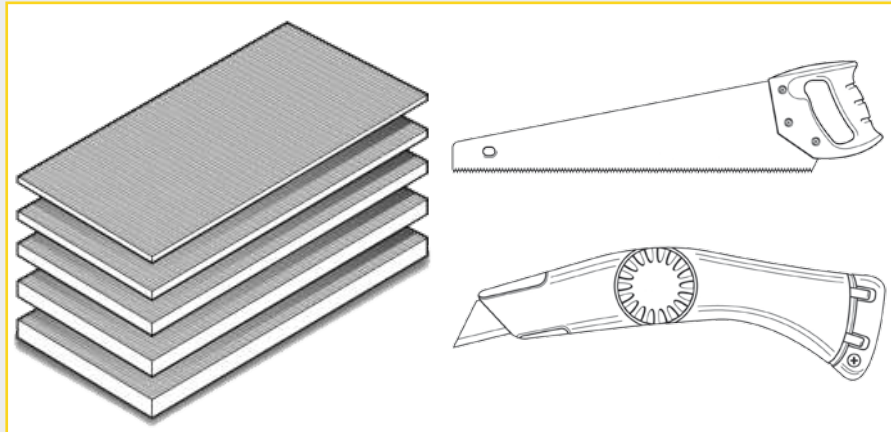
COATED TILE BACKER BOARD

Easy Installation Instructions

Econoboard Coated is a range of flat panels for walls and floors available in thicknesses from 6mm to 50mm.

These easy to cut panels are designed to create the ultimate substrate for underfloor heating systems providing stability and insulation properties.

Econoboard Coated can be used to replace plywood to strengthen and waterproof floors in preparation for underfloor heating.



Easily cut to size and simple to install. Create the **perfect substrate for electric underfloor heating** with ease.

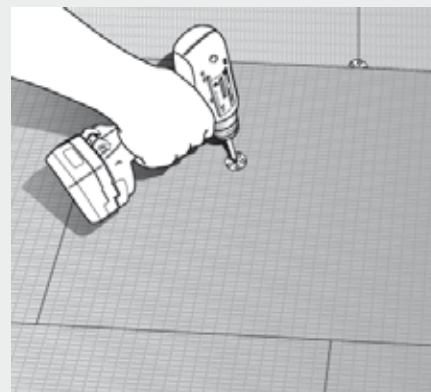
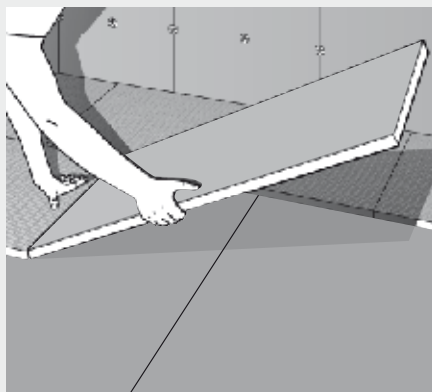
Easy to Work With

Installation onto a timber floor is easy.

Simply cut the Econoboard Coated panels to size using a craft knife or wood saw. Then use our plastic fixing washers (6016) and suitable screws to fix the boards in place.

Take care to identify pipe work and electrical cabling before fixing screws into the floor.

Timber Substrate Insulation



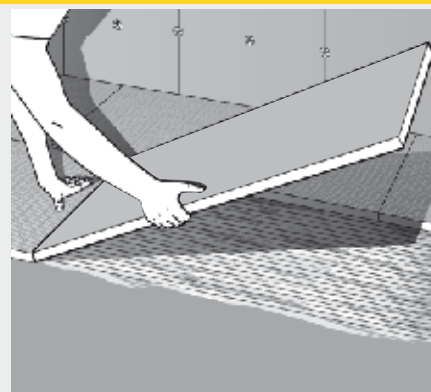
Use on Timber or Concrete

Econoboard can also be installed over concrete floors.

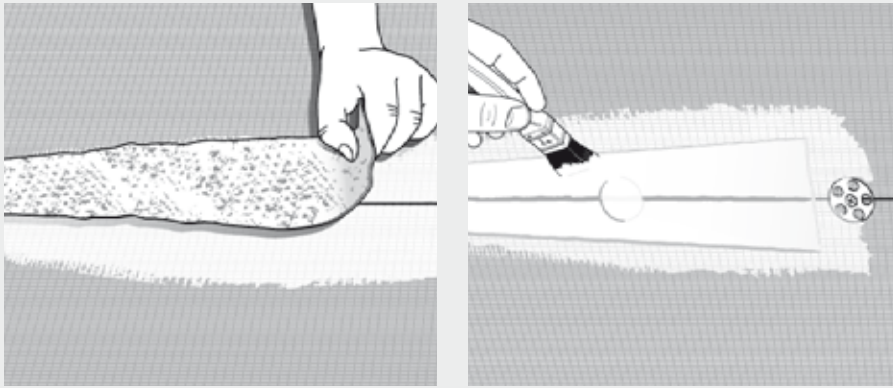
Simply cut the Econoboard panels to size using a craft knife or wood saw. Then use Econofix flexible adhesive (6009) to fix the boards into position.

Both Econoboard and Econoboard Coated can be used in conjunction with our Tanking System (6200) to create a wet room.

Concrete Substrate Insulation



Creating Waterproof Joints



Fool Proof Water Proofing

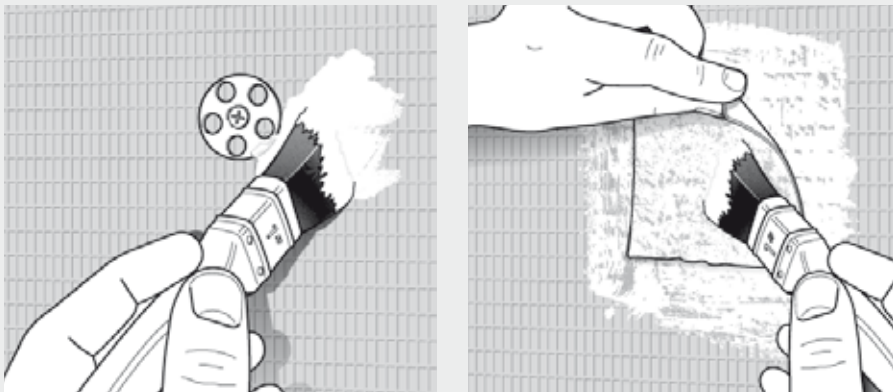
Apply a layer of the liquid membrane to the surface of the boards with a paint brush or roller.

Measure and cut a length of the fibreglass matting and stick in position over the joint.

Paint another coat of liquid membrane over the matting, smooth any creases and allow to dry completely before tiling.

Use with an Econoboard Tanking System to create a **strong, stable and waterproof floor.**

Waterproofing The Washers



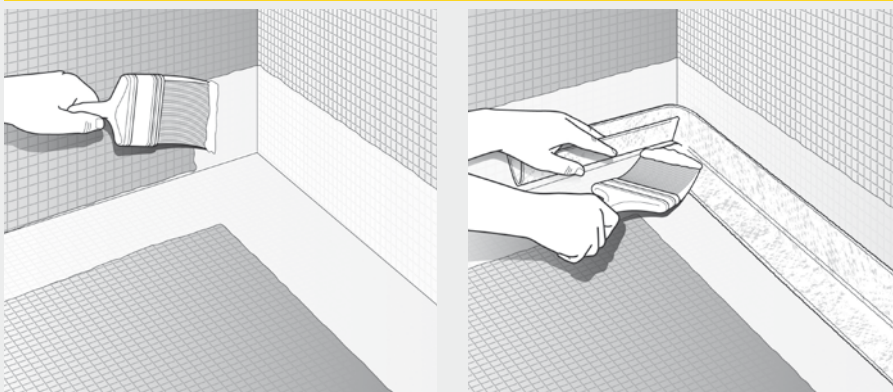
Applying The Liquid Membrane

As with the joints, apply a generous coat of liquid membrane over the washer taking care to cover it completely.

Cut a square of fibreglass matting large enough to cover the entire washer and stick to the liquid membrane.

Apply another coat of liquid membrane using a paint brush or roller smoothing out as necessary and leave to dry.

Creating Waterproof Corners



Waterproofing Corners

Apply a layer of liquid membrane to the floor/wall join with a paint brush or roller ensuring to cover an area 25mm wider than the matting.

Lay the matting over the liquid membrane and apply another coat, taking care to smooth out any creases.

Repeat process for vertical corners ensuring an overlap of at least 25mm.