

thermostats

TOTAL SYSTEM CONTROL

Trouble Free Installation

Check substrate insulation.

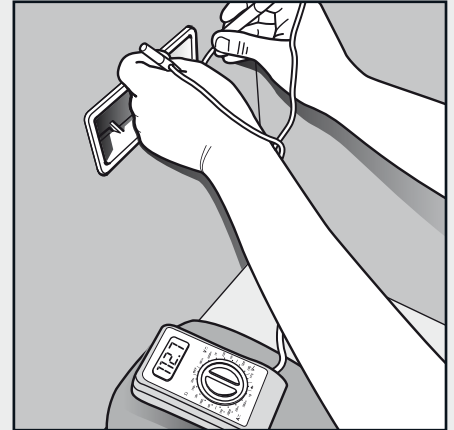
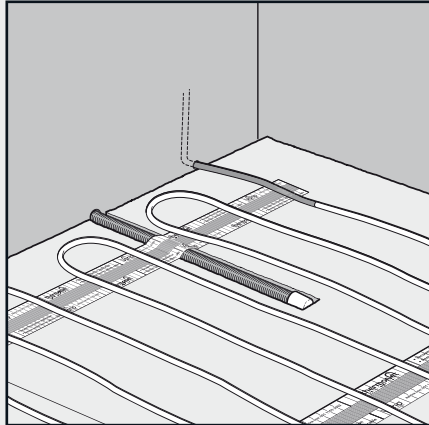
If in doubt use Econoboard (p38) to improve insulation values.

Fit the sensor conduit.

Allows for easy thermostat sensor upgrades in the future.

Follow test procedure.

Always use a Thermonet Monitor (p35) during installation for peace of mind. Use a Multimeter to check resistance of heating circuits as per the instructions.



Electrical safety is paramount so ensure you follow these pointers when installing any Thermogroup UK product.

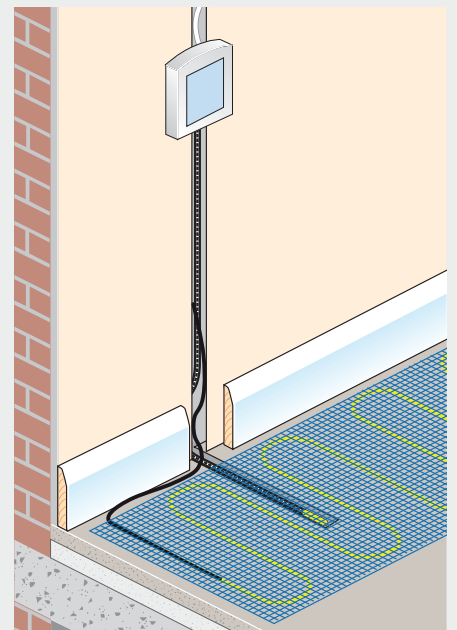
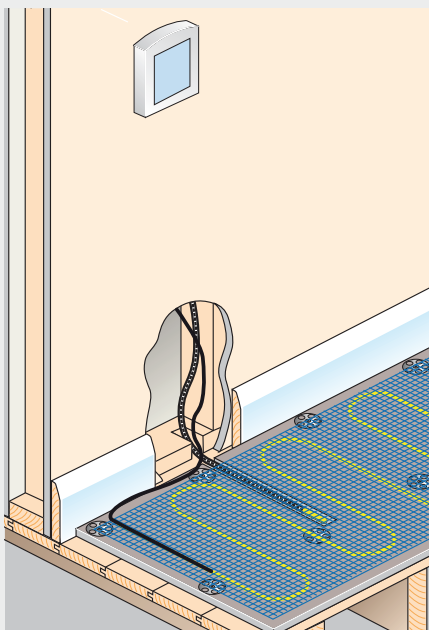
Electrical Regulations

All installations must be carried out in accordance with current electrical regulations. For further information please visit www.theiet.org.

Thermogroup UK always recommend the use of an RCD for any installation.

For installations involving more than one Thermonet heat mat, please ensure that they are wired in parallel back to the thermostat, or use a marshalling box (5276 p34).

Electrical cable & Conduit installation



5259 Thermostats are rated to IP32 and safe for use in Outside Zones.

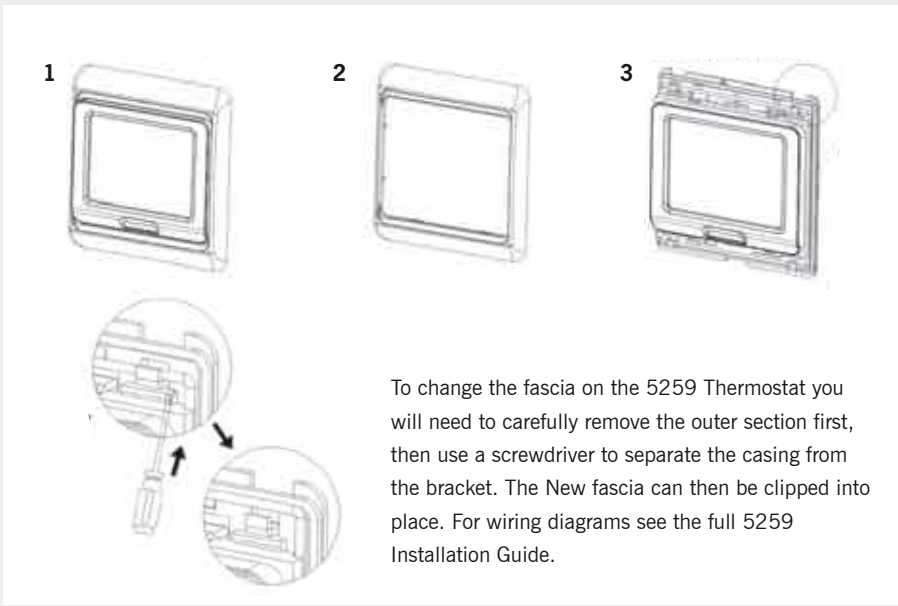
Installation of our 5259 Thermostat in a Stud Wall cavity. The conduit is laid in a channel cut into 10mm Econoboard Coated, on top of a timber substrate.

Installation of our 5259 Thermostat in a solid wall. Cables are run in a channel down the wall and the conduit is laid in a channel in the concrete substrate.



Floor sensor should be positioned in the conduit provided, centrally between the two yellow heating wires and in an area of free floor space.

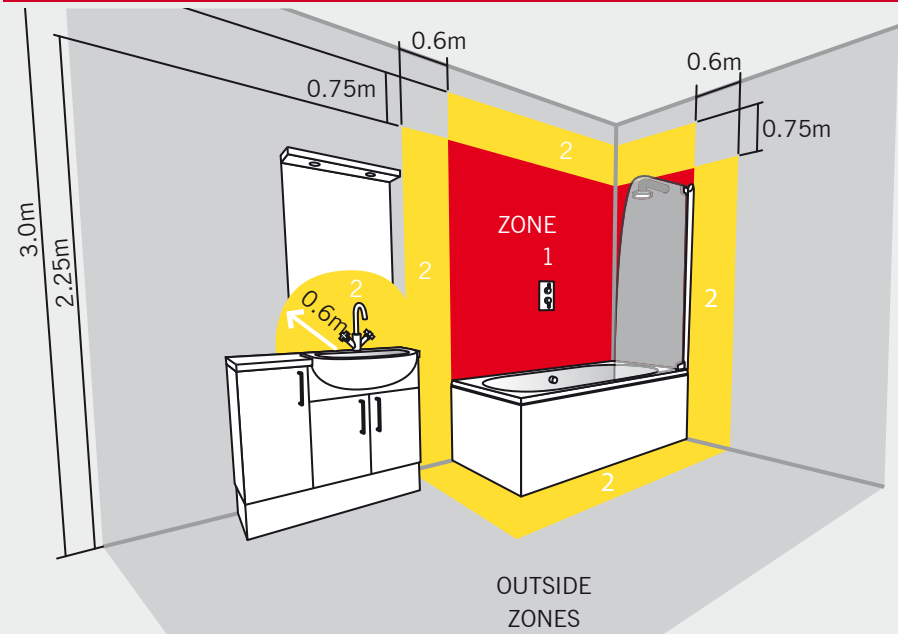
5259 Fascia Change



Product IP Ratings

thermonet <small>UNDERFLOOR HEATING</small>	IP68
thermostats <small>TOTAL SYSTEM CONTROL</small>	IP32
thermomirror <small>MIRROR DE-MISTER PAD</small>	IP45
thermorail <small>ELECTRIC TOWEL HEATERS</small>	IP32
thermorad <small>ELECTRIC RADIANT HEATING</small>	IP24
thermoblast <small>ENERGY EFFICIENT HAND DRYERS</small>	IP22

IP Ratings & Zones



Electrical Safety in Wet Areas

Zone 0 - Inside bath or shower. Any fitting used in this zone must be low voltage (max 12v) and a rating of at least **IPX4** is required.

Zone 1 - Area above the bath to height of 2.25m from the floor. A minimum rating of **IPX4** needed.

Zone 2 - Covers 0.6m outside the perimeter of the bath to a height of 2.25m from the floor. Also covers a radius of 60cm around a wash basin. Minimum rating of **IPX4** required in this zone.

Outside Zones - No specific requirements unless water jets are intended for cleaning purposes.

All Zones - All electrical circuits in bathrooms must be protected by a 30mA RCD. If exposed to water jets such as a shower, a rating of at least **IPX5** is required.

IP Ratings

Electrical fixtures in bathrooms are certified using an IP (Ingress Protection) rating. The IP is followed by 2 numbers refer to the level of protection against the ingress of foreign bodies (1st number) and protection against the ingress of liquids (2nd number).

Zonal Guidelines

All domestic installations must comply with guidelines based on the zonal requirements.

Thermogroup UK recommend that all electrical work is carried out by a qualified electrician in accordance with current IEE regulations (17th Edition & amendments).