



Vario is a **premium loose wire underfloor heating kit** with a unique, patented fixing strip that **reduces fitting time.**

### Super fast fitting

Developed exclusively by Thermogroup UK, the patented Vario fixing strip greatly reduces fitting time on site.

The fixing strip is pre-measured for easy spacing and features aggressive, high grab adhesive to hold the Vario cable in place without the need for extra tape.

*The fastest loose wire system available!*



### No Primers.

The difference is the patented fixing strip. You do not need to prime the floor (except if the tile adhesive requires you to).

**Simply measure the available area of the room (excluding all fitted furniture) in m<sup>2</sup>, multiply by 100 and divide by the length of the cable in your kit; this gives you the wire spacing in cm.**

### No Tapes.

You do not need to tape down the cable. Simply press it in to the aggressive but conforming adhesive layer on the fixing strip.

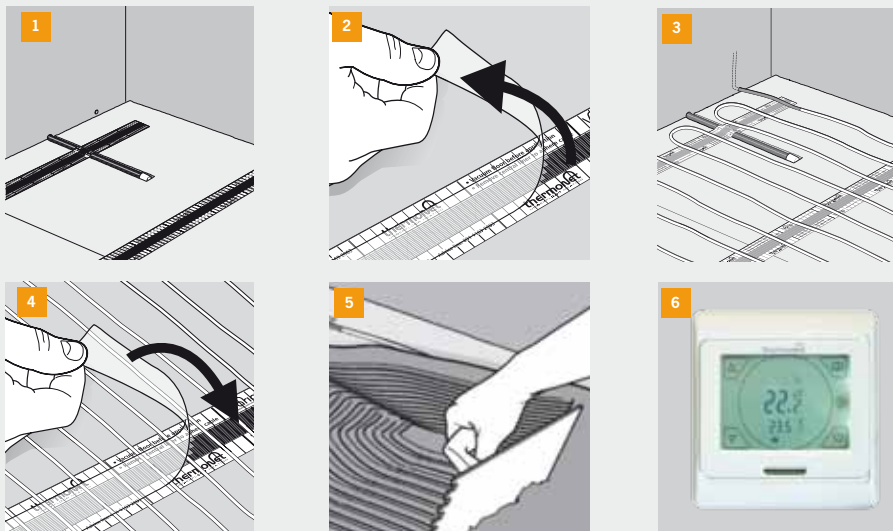
### No Hassle.

You do not need to mark out the floor! The fixing strip has handy 1cm increments printed on it.

**Everything you need in one box.** Eight conveniently sized kits for optimum coverage at 150W/m<sup>2</sup>. Wire spacings can be increased to reduce output or decreased to increase output. Kits include fixing strip, programmable thermostat and instructions.



### Unique, Patented Fixing Method

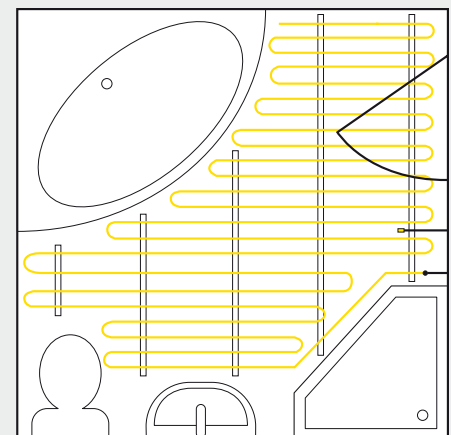


- 1 Chase a channel and lay the sensor cable and conduit. Vacuum substrate and apply fixing strip.
- 2 Peel off the central adhesive covers of the fixing strip and retain for later use.
- 3 Secure cable at regular intervals pre-measured on the fixing strip.
- 4 Reverse and re-apply the adhesive cover to secure the cables.
- 5 Apply Econoplan Self Levelling Compound (6004) or flexible tile adhesive - Econofix (6009).
- 6 Test the resistance of the heating cable before, during and after installation. Finally, connect thermostat

Please Note: These instructions are intended only as an overview of the installation process. Please ensure to read and ensure you fully understand the full installation guide included with every Vario box before attempting installation. **See p30 for details on Thermostats.**

### Vario Kits (including thermostat)

STOCK NO	DESCRIPTION	AREA (M <sup>2</sup> )	LENGTH (LM)	OUTPUT (W)	EX VAT (£)
2101	Kit 1 inc. Thermostat	0.5 to 1.0	8	92	POA
2102	Kit 2 inc. Thermostat	1.0 to 2.0	13	85	POA
2103	Kit 3 inc. Thermostat	2.0 to 3.0	20	294	POA
2104	Kit 4 inc. Thermostat	3.0 to 4.0	29	424	POA
2106	Kit 6 inc. Thermostat	4.0 to 6.0	41	586	POA
2108	Kit 8 inc. Thermostat	5.0 to 8.0	55	767	POA
2110	Kit 10 inc. Thermostat	6.0 to 10.0	69	958	POA
2112	Kit 12 inc. Thermostat	8.0 to 12.0	85	1222	POA



Typical Vario installation layout.

### Vario Kits (excluding thermostat)

STOCK NO	DESCRIPTION	AREA (M <sup>2</sup> )	LENGTH (LM)	OUTPUT (W)	EX VAT (£)
2201	Kit 1 exc. Thermostat	0.5 to 1.0	8	92	POA
2202	Kit 2 exc. Thermostat	1.0 to 2.0	13	85	POA
2203	Kit 3 exc. Thermostat	2.0 to 3.0	20	294	POA
2204	Kit 4 exc. Thermostat	3.0 to 4.0	29	424	POA
2206	Kit 6 exc. Thermostat	4.0 to 6.0	41	586	POA
2208	Kit 8 exc. Thermostat	5.0 to 8.0	55	767	POA
2210	Kit 10 exc. Thermostat	6.0 to 10.0	69	958	POA
2212	Kit 12 exc. Thermostat	8.0 to 12.0	85	1222	POA

### Features at a glance

- PATENTED HYBRID FIXING SYSTEM
- NO PRIMER, NO TAPES, NO HASSLE
- 25 YEAR CABLE WARRANTY
- PRIMARY HEATSOURCE POSSIBLE
- TOTALLY SAFE – SUITABLE FOR USE IN WET ROOMS