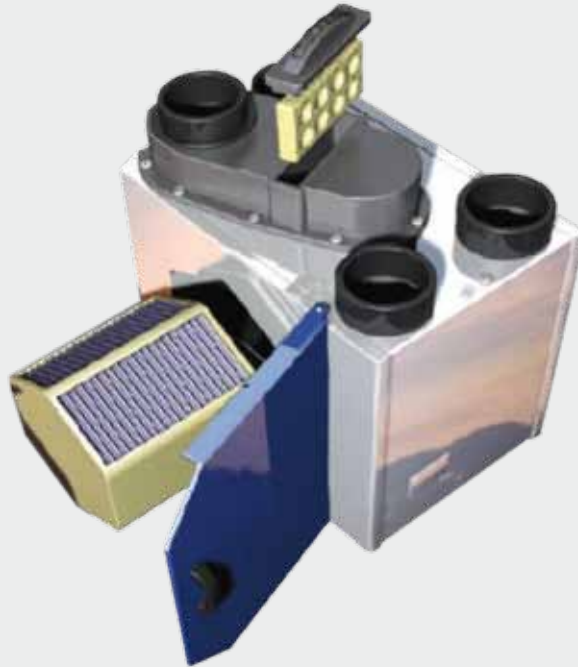


thermoventer

HEAT RECOVERY VENTILATION

A **central system** supplying clean filtered air and extracting old, damp air. Up to **95% heat recovery** saves energy.



Thermoventer Central

A continuous balanced mechanical central supply and extract system which can be housed in a loft or cupboard space. The integral heat exchanger converts up to 95% of heat energy from the extracted air and reintroduces it into the supply air. This significantly reduces the energy demands in the house.

Thermoventer Central

STOCK NO	DESCRIPTION	SIZE (M ³ /HR)	UNIT	EX VAT (£)
4300	HRV1.0 Q Plus	150	ea	POA
4306	HRV1.5 Q Plus	250	ea	POA
4308	HRV2.0 Q Plus	300	ea	POA
4310	HRV3.0 Q Plus	350	ea	POA
4301	HRV1.0 Q Plus Filters		1 set	POA
4302	HRV1.0 Q Plus Filters		12 sets	POA
4312	HRV1.5/2.0/3.0 Plus Filters		1 set	POA
4313	HRV1.5/2.0/3.0 Plus Filters		12 sets	POA

WHY THERMOVENTER CENTRAL?

- UP TO 95% HEAT RECOVERY
- COMPLETE DUCTED SYSTEM
- SAP Q BEST PRACTICE COMPLIANT
- IMPROVES INDOOR AIR QUALITY

95% Efficient

Utilising the recuperative principle the heat exchangers work on a multi direction cross flow basis to bring maximum efficiency.

Building Control Document F1 2006

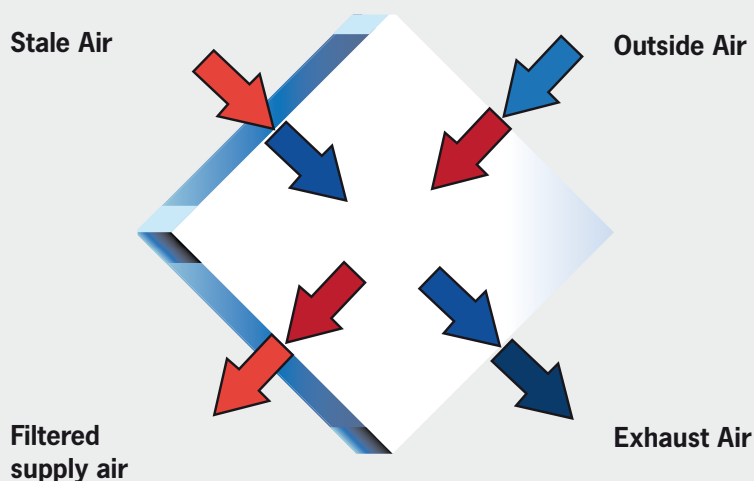
Meets the requirements set out in document F1 2006.

Accessories Available

Please contact us for info about our range of ductwork including one-piece lightweight insulated ducts and flat plastic ductwork.



Thermoventer Recuperative Principle



How Thermoventer Works

Air is filtered and warmed in the central unit which is usually placed in a loft space or utility area. The outside air is drawn in through a vent shaft in the roof, filtered and warmed in the central unit and distributed around the house via a network of ducts with vents in every room. Extractor fans in kitchens and bathrooms can also be connected to Thermoventer central to eliminate odours, condensation and mould. Extracted air passes through the ceramic heat exchanger and up to 95% of the heat is retained and passed back into the filtered air.

Thermoventer Ductwork & Accessories

STOCK NO	DESCRIPTION	SIZE (MM)	UNIT	EX VAT (£)
4324	Ceiling Extract Diffuser	125	ea	POA
4326	Ceiling Supply Diffuser	125	ea	POA
4328	Round Duct ø125mm	1000	ea	POA
4332	Round Duct 90° Bend	125	ea	POA
4334	Round Duct 45° Bend	125	ea	POA
4336	Round Duct Connector	125	ea	POA
4338	Fixing Bracket	125	ea	POA
4340	External Round Grille White	125	ea	POA
4342	External Louvred Grille White	125	ea	POA
4350	Duct 204mm x 60mm	1000	ea	POA
4356	Horizontal 90° Bend (to suit 4350)		ea	POA
4358	Horizontal 45° Bend (to suit 4350)		ea	POA
4360	Vertical 90° Bend (to suit 4350)		ea	POA
4362	Vertical 45° Bend (to suit 4350)		ea	POA
4364	Tee Piece (to suit 4350)		ea	POA
4366	Duct to ø125mm 90° (to suit 4350)		ea	POA
4368	Duct to Vertical ø125mm 90° (to suit 4350)		ea	POA
4370	Duct to Horizontal ø125mm 90° (to suit 4350)		ea	POA
4374	127mm PVC Netted Hose		ea	POA
4376	Momentary Boost Switch		ea	POA

Recuperative Principle

With this method of heat transfer, the air is channelled along square tubes in alternative directions. This ensures there is no mixing of stale and fresh air but the heat is transferred from the exhaust flow to the supply flow efficiently. With this method you can achieve a very cost effective solution with just one unit. There is not usually a call for a drain off for the condensation as what little is produced is carried outside with the exhaust air.

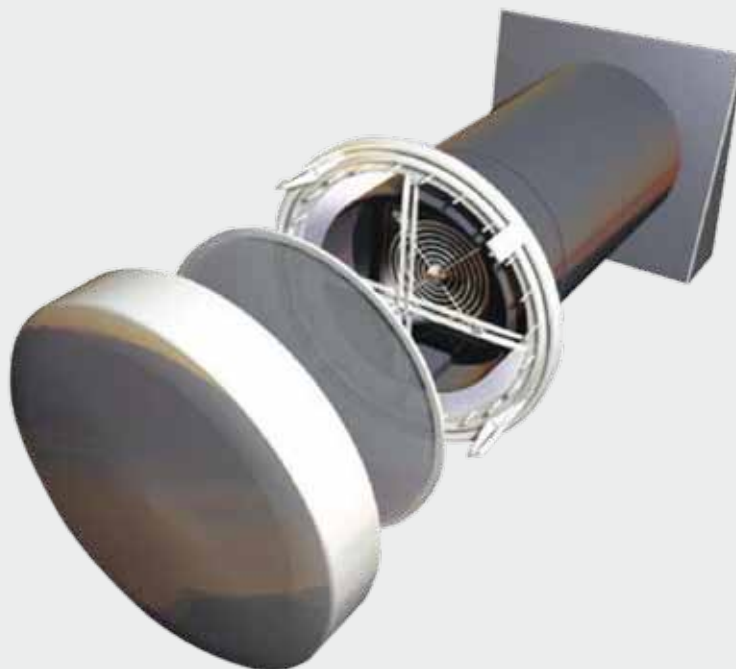
Features at a glance

- OPTIMUM HEAT RECOVERY
- SILENT OPERATION
- ECONOMICAL TO RUN
- CENTRAL CONTROL
- 3 YEAR GUARANTEE
- CAN BE LOCATED IN LOFT SPACE
- UNOBTRUSIVE

thermoventer

HEAT RECOVERY VENTILATION

A constant flow of fresh air while **retaining 92% of heat energy** and eliminating condensation and mould.



Heat Recovery Ventilation

As new dwellings are built to ever increasing levels of insulation and air tightness, the need for forced ventilation increases also. Opening a window to ventilate a room is no longer a viable solution as this frequently leads to either too much ventilation or too little and promotes health risks and building damage, through humidity, mould formation and airborne pollutants like dust or pollen.

Thermoventer HRV-14

The original system. Must be used as a pair of units or more. Designed to suit a wall thickness of 25-46cm. HRV-14 has a diameter of 23cm and can be easily retrofitted to most types of wall construction. A pair of units do not have to be in the same room to work effectively (depending on room size).

Thermoventer Technical Data

FACTOR	HRV-14	HRV-TWIN
Energy Recovery	< 92%	<88%
Airflow	< 30m ³ /h	< 40m ³ /h
Wall Opening (cm)	21 x 21 / ø 22	14 x 27
Wall Thickness (cm)	25 - 46	30 - 46
Power Consumption	2 - 3W	4 - 6W
Sound Level	> 19 Db (A)	> 22 Db (A)
Usage	Use In Pairs	One Room
Fan Motor	12V DC	12V DC

Thermoventer HRV-14/Twin

STOCK NO	DESCRIPTION	SIZE (MM)	EX VAT (£)
4200	HRV-14 Complete Unit	ø 230	POA
4202	HRV-Twin Complete Unit	150 x 270	POA
4203	External Soundproofing Kit		POA
4204	Internal Soundproofing Kit		POA
4205	Multi Function Control Switch		POA



Extraction of Stale Air and Supply of Fresh Air



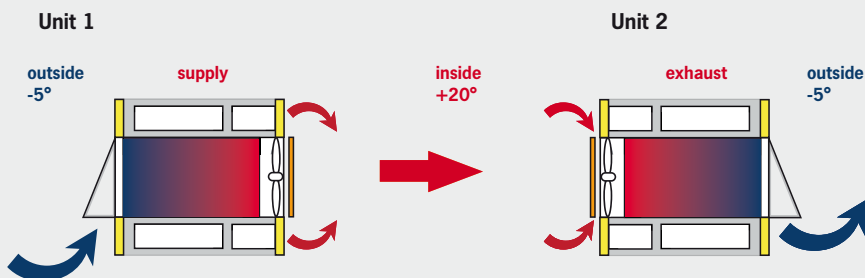
Recuperative Principle

One Thermoventer unit is mounted in every room that needs to be ventilated (2 units in bigger rooms). The airflow is shown on the ground plan: fresh, filtered and pre warmed air comes in at both Thermoventer units in the living room, while stale moisture laden air is extracted by Thermoventer units in the kitchen and the bathroom. After 70 seconds the controller reverses the rotation direction of all ventilators.

Thermoventer Accessories

Additional soundproofing is available for installations where traffic noise may be a concern. This is simply fitted in the inner or outer covers as required. Installation kits are available including diamond core drills for ease of installation.

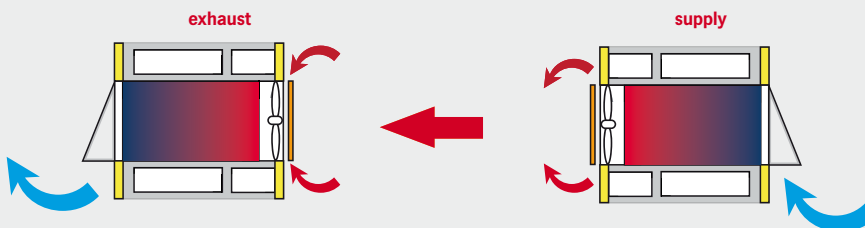
Energy Recovery System



Exhaust mode

Stale / warm air passes through the heat accumulator and warms it up until the controller reverses fan direction again

After 70 seconds the fan changes directions



Supply mode

Fresh cool air passes through the heat accumulator, is warmed up as the accumulator cools and the controller reverses fan direction again

The Advantages

- Moisture is put back into the room
- Mimics natural 'breathing'
- No condensation run off
- Constant fresh air



Features at a glance

- INCREASE IN AIR QUALITY
- REDUCTION IN HEATING ENERGY CONSUMPTION
- IDEAL FOR NEW BUILD AND RENOVATION
- REDUCE CARBON EMISSIONS
- UP TO 92% HEAT RECOVERY
- PREVENT MOULD AND CONDENSATION
- DRAUGHT FREE
- FILTERS AIRBORNE ASTHMA AND ALLERGY TRIGGERS